

AVAILABLE FOR SALE

HAMILTON MILL COMMONS, BUILDING 3605

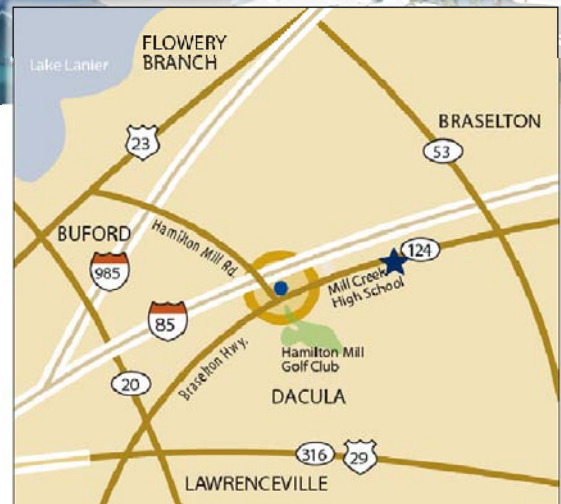
3605 BRASELTON HIGHWAY, DACULA, GEORGIA 30019



LISTING DETAILS:

- Hamilton Mill Commons, Building 3605 consists of approximately 5,250 square feet of professional office space. Built in 2001 and has an average of 4.6 parking spaces per 1,000 sq. ft.
- **BANK OWNED PROPERTY** - Sales Price \$556,500.00
- The Hamilton Mill Office Park consists of 3 one-story and 3 two-story buildings totaling approximately 45,000 square feet. The buildings in the park have four-sided brick exteriors with pitched, gabled roofs. The roof covering is architectural, asphalt shingles in a conservative color that accentuates the buildings. The buildings are designed in a traditional style of architecture that allows them to blend in with neighborhood surroundings including the Hamilton Mill subdivision, a 2,500 home golf and tennis community.

www.robertscommercial.com



CONTACT INFORMATION:

Brandon Crim

Office: 678.527.0730

bcrim@robertscommercial.com

Roberts Commercial Real Estate Services

9875 Medlock Bridge Parkway, Suite 200

Johns Creek, Georgia 30022

Roberts Commercial

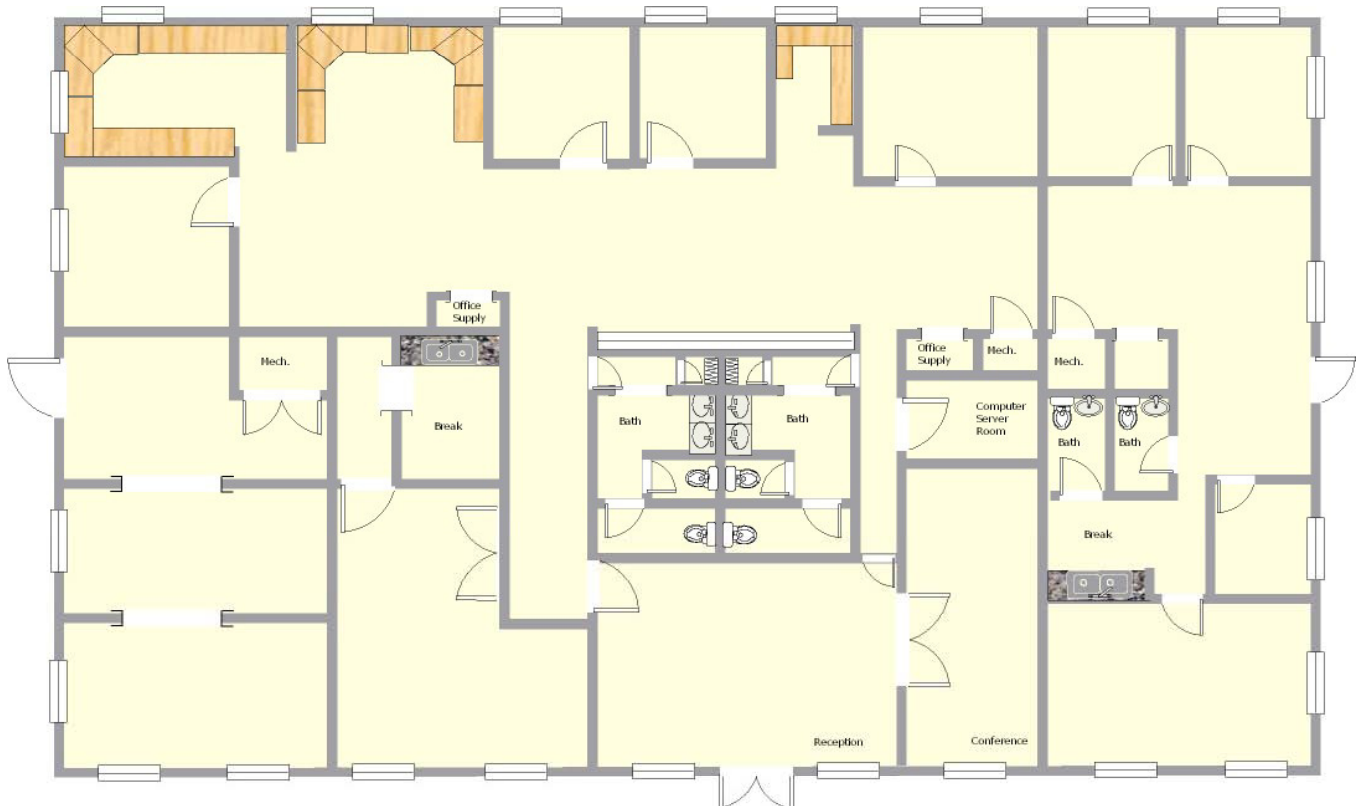
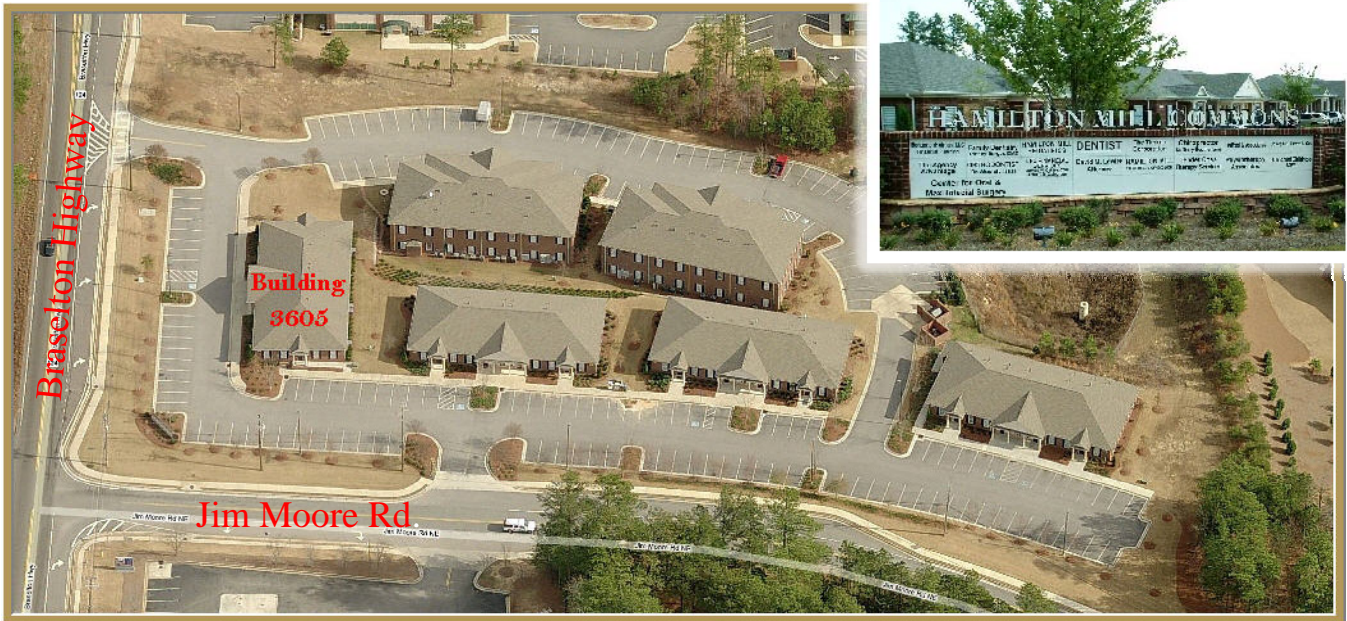
REAL ESTATE SERVICES

No warranty or representation, expressed or implied, is made as to the accuracy of information contained herein. In consideration of the within information, purchaser agrees to rely solely on its right, and assumes the duty to independently obtain and analyze all information.

AVAILABLE FOR SALE

HAMILTON MILL COMMONS, BUILDING 3605

3605 BRASELTON HIGHWAY, DACULA, GEORGIA 30019



Roberts Commercial

REAL ESTATE SERVICES

No warranty or representation, expressed or implied, is made as to the accuracy of information contained herein. In consideration of the within information, purchaser agrees to rely solely on its right, and assumes the duty to independently obtain and analyze all information.