

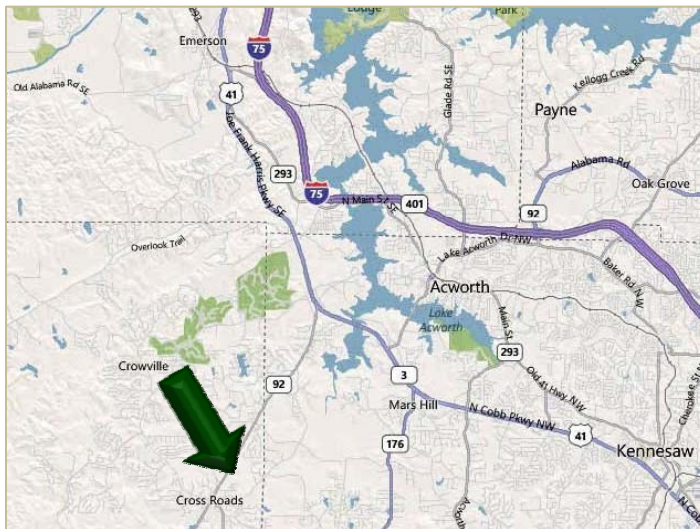
AVAILABLE FOR SALE

13.93 ACRES IN PAULDING COUNTY

9158 Dallas Acworth Highway, Acworth, GA 30101



AREA MAP



DETAILS

- 13.93 Acres of Undeveloped Raw Land
- Zoned – B-2 Highway Business District
- Utilities Available
- Property Accessed via Dallas Acworth Highway- Four Miles South of Cobb Parkway

CONTACT INFORMATION

Paul T. Aase, CCIM, MAI
Tel: 678.527.0724
paase@robertscommercial.com
www.robertscommercial.com

Roberts Commercial
REAL ESTATE SERVICES

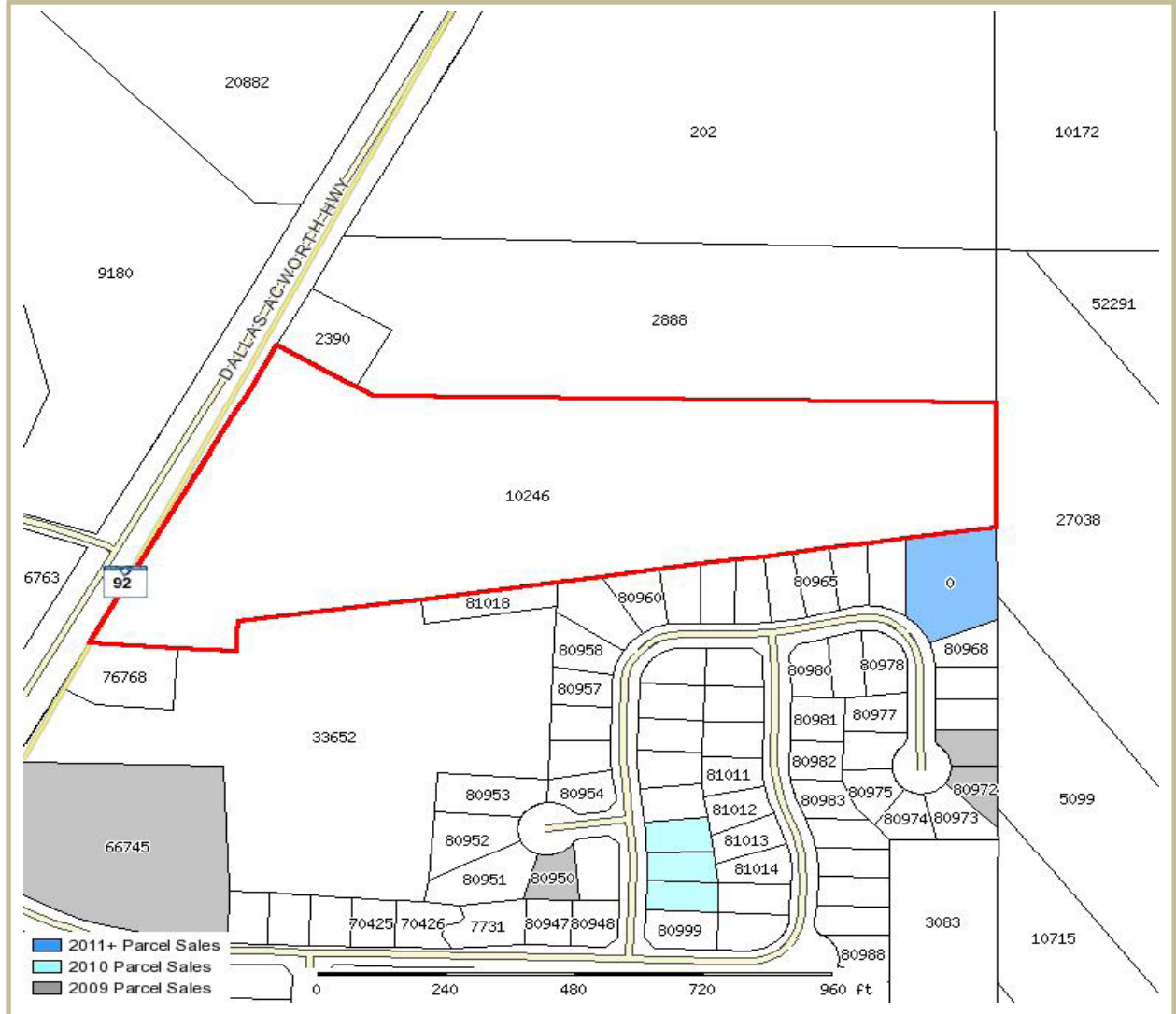
3921 Johns Creek Court, Suite B, Suwanee, Georgia 30024 Tel: 770.840.9395 Fax: 770.840.0275

Information contained herein has been provided to broker by sources deemed reliable; however, no representation or warranty is made to the accuracy thereof.

AVAILABLE FOR SALE

13.93 ACRES IN PAULDING COUNTY

9158 Dallas Acworth Highway, Acworth, GA 30101



CONTACT INFORMATION

Paul T. Aase, CCIM, MAI

Tel: 678.527.0724

paase@robertscommercial.com

www.robertscommercial.com

Roberts Commercial

REAL ESTATE SERVICES

3921 Johns Creek Court, Suite B, Suwanee, Georgia 30024 Tel: 770.840.9395 Fax: 770.840.0275

Information contained herein has been provided to broker by sources deemed reliable; however, no representation or warranty is made to the accuracy thereof.