

AVAILABLE FOR SALE

SALE IS CONFIDENTIAL
MUST CONTACT AGENT TO VIEW PROPERTY

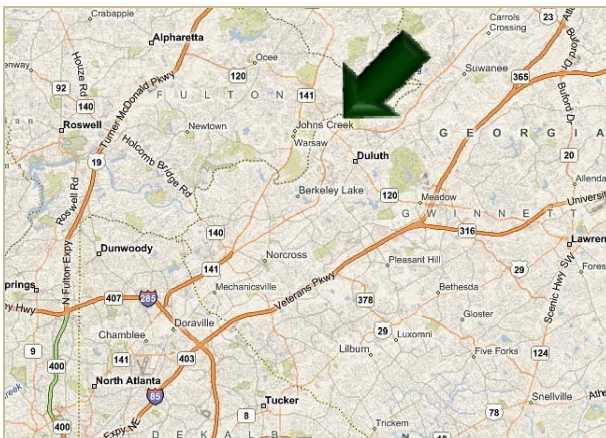
EXECUTIVE CAR WASH FACILITY

4085 JOHNS CREEK PARKWAY, SUWANEE, GEORGIA 30024



PROPERTY | BUSINESS SUMMARY

- Full Service, Soft Cloth Car Wash
- Situated On 1.45 Acres In Prestigious Johns Creek Area
- Fully Equipped Automated Car Wash Tunnel With 2 Detailing Bays And 3 Maintenance/Service Bays
- Water Reclaim System
- Large, Impressive Lobby And Reception Area
- Large Parking Lot With Plenty Of Room For Car Storage
- Great Street Frontage Lot With Side Street Accessibility
- 48,000 Vpd Based On 2010 Traffic Counts By The Gdot
- Over 11 Million In Sales Over The Last Decade



CONTACT INFORMATION

PAUL T. AASE, CCIM, MAI
TEL: 678.527.0724
PAASE@ROBERTSCOMMERCIAL.COM
WWW.ROBERTSCOMMERCIAL.COM

Roberts Commercial
REAL ESTATE SERVICES

9875 Medlock Bridge Parkway, Suite 200, Johns Creek, Georgia 30022 Tel: 770.840.9395 Fax: 770.840.0275
Information contained herein has been provided to broker by sources deemed reliable; however, no representation or warranty is made to the accuracy thereof.

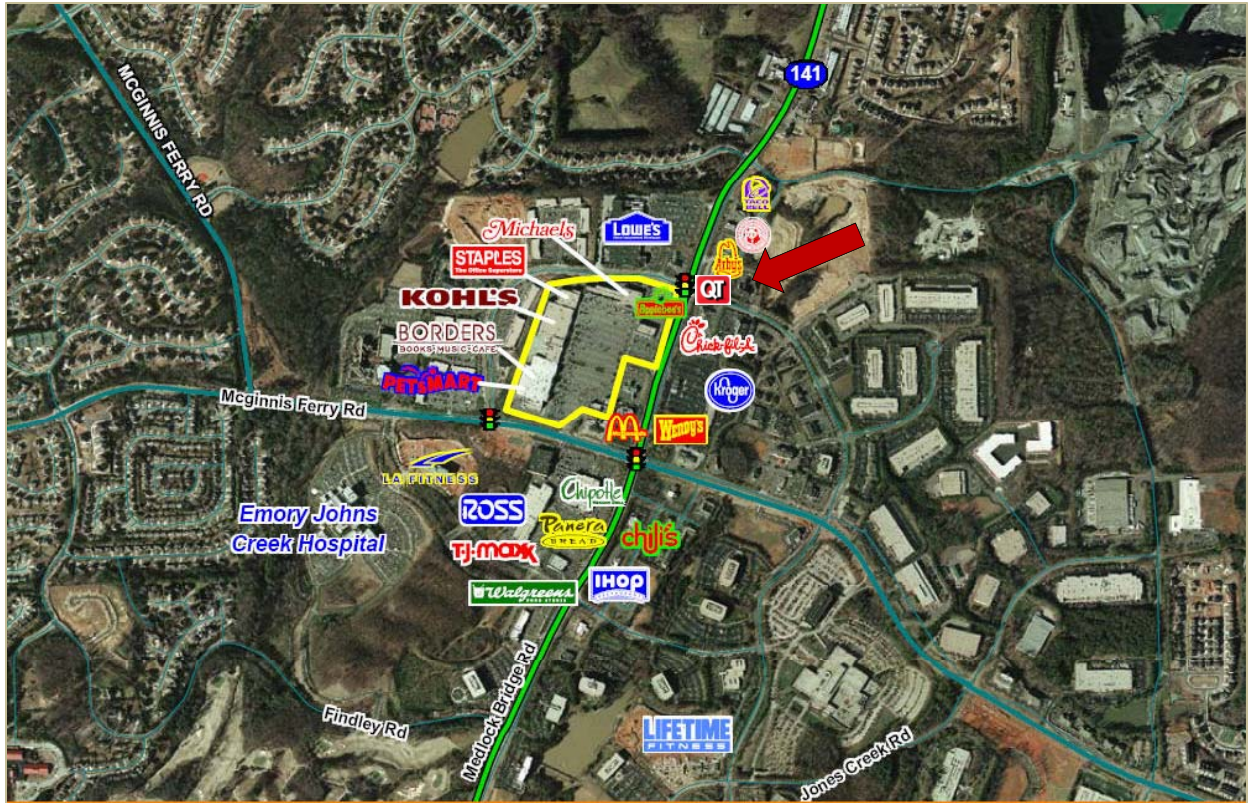
AVAILABLE FOR SALE

SALE IS CONFIDENTIAL

MUST CONTACT AGENT TO VIEW PROPERTY

EXECUTIVE CAR WASH FACILITY

4085 JOHNS CREEK PARKWAY, SUWANEE, GEORGIA 30024



9875 Medlock Bridge Parkway, Suite 200, Johns Creek, Georgia 30022 Tel: 770.840.9395 Fax: 770.840.0275

Information contained herein has been provided to broker by sources deemed reliable; however, no representation or warranty is made to the accuracy thereof.