

**AVAILABLE FOR LEASE**  
**MARKET CENTER II SHOPPING CENTER**  
**2000 Holcomb Woods Parkway**  
**Roswell, Georgia 30076**



**Contact Information**

**Gil Russell or Brandon Crim**  
**[grussell@robertscommercial.com](mailto:grussell@robertscommercial.com)**  
**[bcrim@robertscommercial.com](mailto:bcrim@robertscommercial.com)**

**Roberts Commercial Real Estate Services**  
9875 Medlock Bridge Parkway, Suite 200  
Alpharetta, Georgia 30022  
Main: 770.840.9395  
Fax: 770.840.0275

**[www.robertscommercial.com](http://www.robertscommercial.com)**

**Listing Details**

- **Great 88,657 Sq. Ft. Retail Center Available For Lease. Property has Ample Parking with a Ratio of 5.29 spaces per 1,000 sq. ft.**
- **Center Located at Holcomb Woods Parkway and Holcomb Bridge Road off of Georgia 400.**
- **Property is in a very Active Retail Area and has Great Demographics and Traffic Counts.**
- **Surrounding Retail Includes:**
  - Home Depot*
  - Office Depot*
  - Publix*
  - PGA Superstore*
- **Offering Aggressive Rates and Lease Terms.**

**Roberts Commercial**

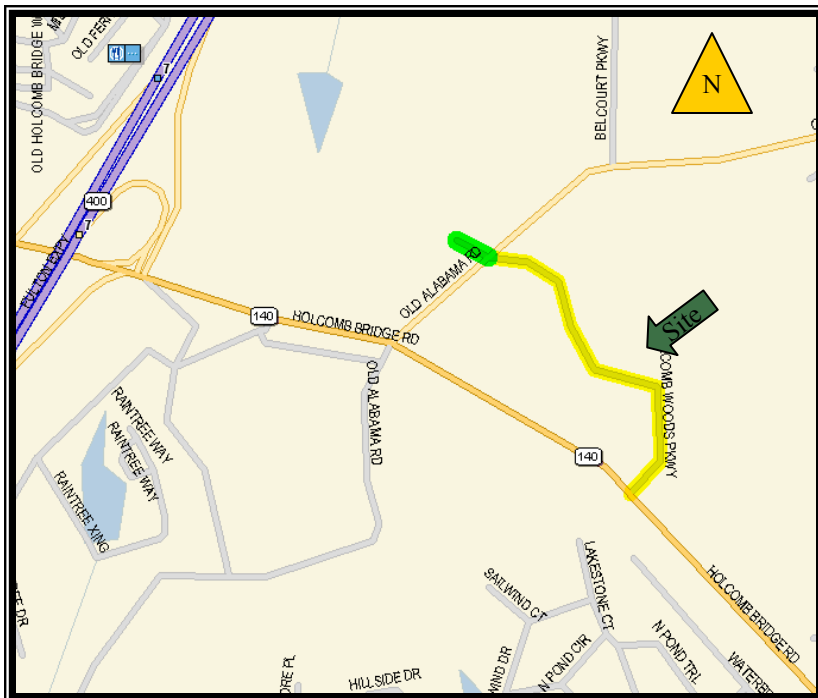
REAL ESTATE SERVICES

No warranty or representation, expressed or implied, is made as to the accuracy of information contained herein. In consideration of the within information, purchaser agrees to rely solely on its right, and assumes the duty to independently obtain and analyze all information.

# AVAILABLE FOR LEASE

## MARKET CENTER II SHOPPING CENTER

2000 Holcomb Woods Parkway, Roswell, Georgia 30076



<b>DEMOGRAPHICS</b>		
Radius	Postal Drop Population	Average HH Income
1 Mile	14,520	\$ 80,031
3 Mile	68,048	\$ 98,624
5 Mile	169,089	\$ 115,628

<b>TRAFFIC COUNTS</b>	
Holcomb Bridge Road	106,655 VPD

**Roberts Commercial**

REAL ESTATE SERVICES

No warranty or representation, expressed or implied, is made as to the accuracy of information contained herein. In consideration of the within information, purchaser agrees to rely solely on its right, and assumes the duty to independently obtain and analyze all information.