

AVAILABLE FOR SALE OR LEASE

PADDOCKS PROFESSIONAL PARK

3330 PADDOCKS PARKWAY, SUWANEE, GEORGIA 30024



AVAILABLE

Medical/Professional Office Buildings
For Sale or Lease

LOCATION

Highway 141 and Paddocks Parkway
Johns Creek, Georgia 30024

SQUARE FOOTAGE

1,500 – 6,600 Square Foot Buildings Available
60,000 Total Square Foot Development

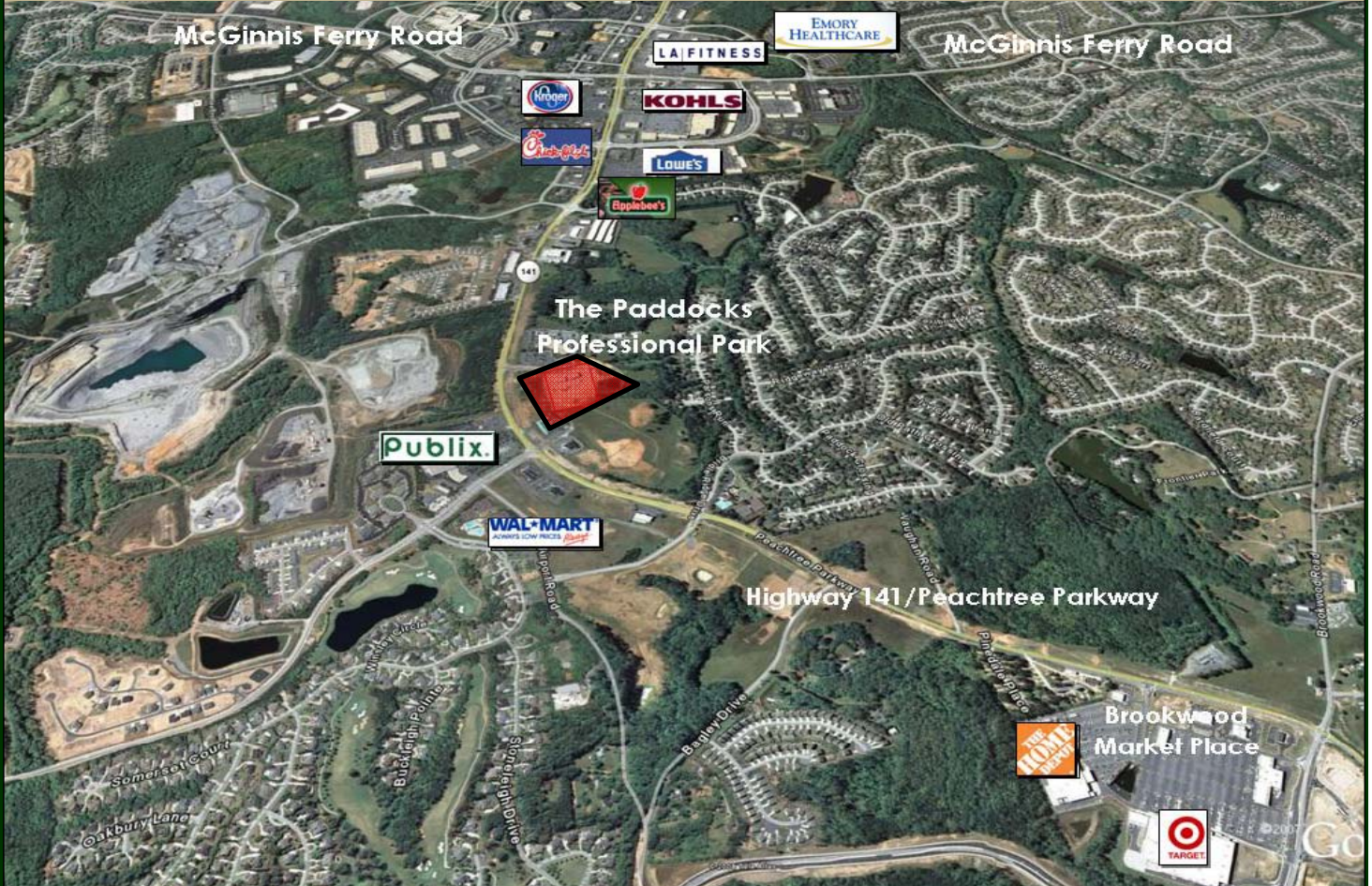
CONTACT INFORMATION

Leigh Roberts
Roberts Commercial Real Estate Services
9875 Medlock Bridge Parkway
Suite 200
Johns Creek, Georgia 30022
Direct: 678.527.0725
Email: lroberts@robertscommercial.com
Office: 770.840.9395
Fax: 770.840.0275

www.robertscommercial.com

Roberts Commercial
REAL ESTATE SERVICES

PADDOCKS PROFESSIONAL PARK



LISTING DETAILS AND DEMOGRAPHICS

- Ten, class "A" Medical/Professional Office Condominiums/Buildings available.
- Units for sale or lease from 1,500 – 6,600 sq. ft. Individual suites or buildings available.
- Suites sold in shell condition allowing customization of space.
- Site offers an excellent location in Forsyth County at the Intersection of Highway 141 and Paddock Pkwy.
 - Convenient to many shops, restaurants and banking institutions and many other area amenities.
 - Located approximately **1.3 miles** north of the new Emory Johns Creek Hospital.

	<u>1 mile</u>	<u>3 mile</u>	<u>5 mile</u>
Area Population	1,985	58,324	152,029
Area Households	612	18,279	51,674
Average Household Income	\$212,640	\$208,321	\$171,393

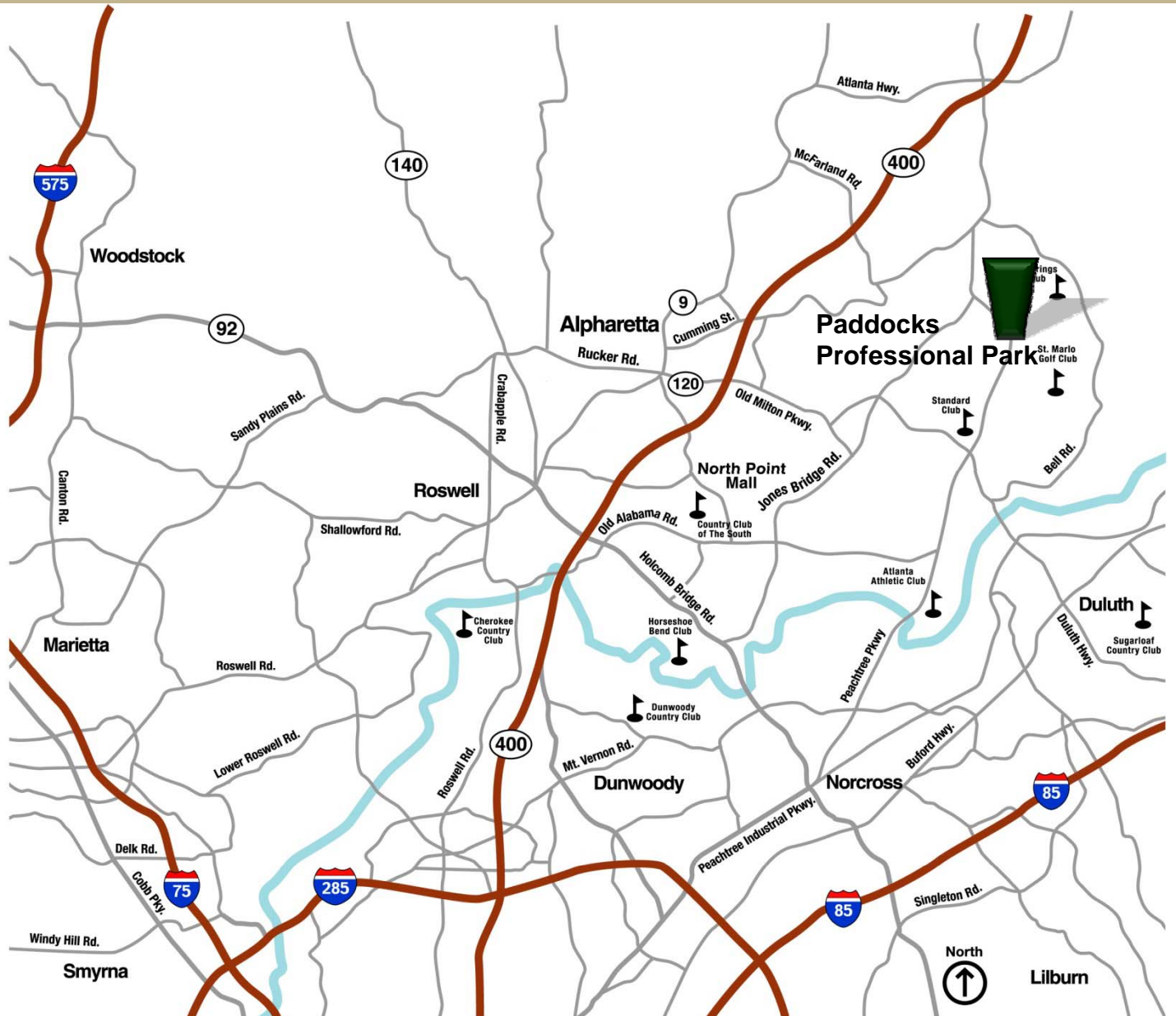
PADDOCKS PROFESSIONAL PARK



AVAILABILITY

<u>Building</u>	<u>Availability</u>	<u>Building</u>	<u>Availability</u>
3330	SOLD	3380	To Be Built
3340	SOLD	3390	To Be Built
3350	SOLD	3410	To Be Built
3360	To Be Built	3420	To Be Built
3370	5,500 SF	3430	To Be Built

PADDOCKS PROFESSIONAL PARK



Leigh Roberts
Roberts Commercial Real Estate Services
9875 Medlock Bridge Parkway, Suite 200
Alpharetta, Georgia 30022
Direct: 678.527.0725
Email: lroberts@robertscommercial.com
Office: 770.840.9395
Fax: 770.840.0275

Roberts Commercial
REAL ESTATE SERVICES